

Nanshumonzen-dori Street Area Landscape Scheme

Overview of the Nanshumonzen-dori Street area

The Nanshumonzen-dori Street area is located on a gentle slope that runs between the Kasuga-cho intersection of Japan National Route 10 and Nanshu Park, a park that offers views of Sakurajima.

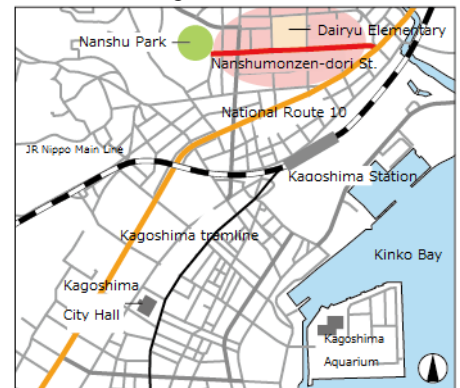
The Inarigawa River flows on the eastern side of the area and the Ahirugawa River runs through canals on the northern side. The Dairyu remains (Dairyu, Kasuga-cho and Wakamiya) are located in the area and relics from every era since the Jomon era have been discovered here.

The street is named Nanshumonzen-dori because in 1880 the place which is now Nanshu Park was established as a place of worship for the spirits of those who fell in battle (including Takamori Saigo) at the end of the Satsuma Rebellion. In 1922 it became known as Nanshu Shrine. There is a stone-paved road at the steps of Nanshu Park and the stone wall from the childhood home of Tenshoin Atsuhime, Imaizumi Shimadzu-ke, remains, preserving the appearance of that time period. Further, on the eastern side where the feudal lord's castle, Uchijiro, (the castle before Kagoshima castle was constructed) once was, remains the base of a stone wall. Dairyu temple was constructed in place of Uchijiro, and then after that it became Dairyu elementary school. The stone wall runs from Nanshu Shrine to Dairyu-cho and Kasuga-cho. The section of the wall at Kagoshima Citizens Cultural Education and Research Center (Kagoshima Kenmin Kyouiku Bunka Kenkyujo) is recognized as the #1 most important landscape construction in Kagoshima city.

In the fiscal year of 1993-1994 a stone footpath made from local stones from Koyamada was outfitted. This was done at the same time as undergrounding works for a historical amenity cloister, to bring balance to the surrounding stone wall. Yew plum pines, designer street lamps, stone lanterns and flower beds were also installed.

The roadside trees and trees that grow on the premises give the street a nice form, and the presence of the stone walls adds to the scenery to a large degree, acting as an important component of the landscape.

There are many places to view the magnificent volcano Sakurajima in the area, a sight that is carried in the hearts of the people raised in this area. It is in close proximity to areas with favorable natural environments like the evergreen forests that grow in Tagayama, and Inarigawa River a place that various living things inhabit.



The location of Nanshumonzen-dori Street



Nanshumonzen-dori Street as seen from Jokomyoji temple



Dairyu Temple ruins (currently Dairyu Elementary School)

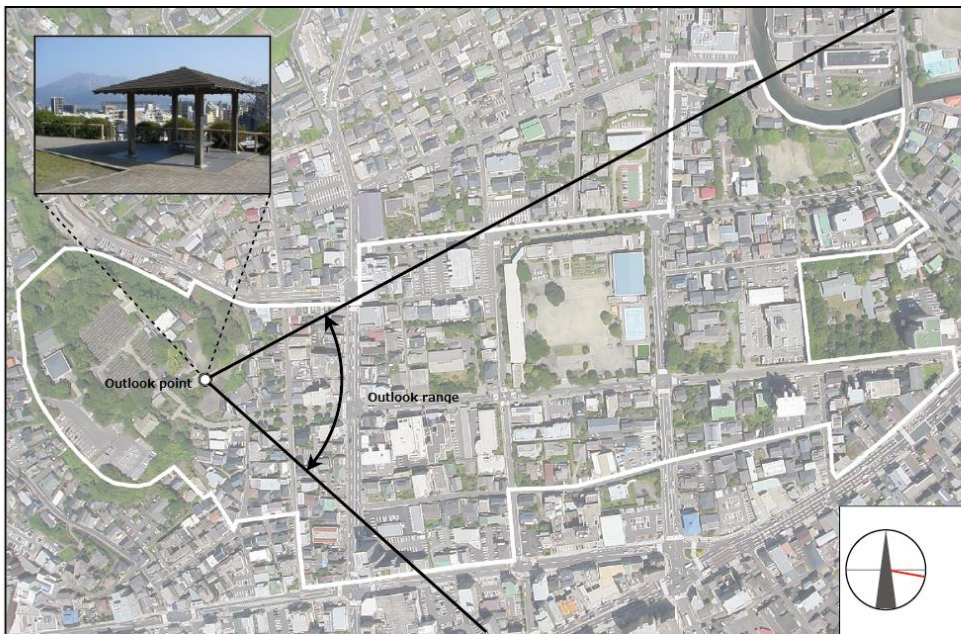
◇ Outlook Point (Nanshu Park)

【31° 36' 20" N6418, 130° 33' 34" E4246, elevation of 32.8m】

The graves of Takamori Saigo and many Satsuma Soldiers who fell in the Satsuma Rebellion are located in Nanshu Park. There, you can also see Nanshu Shrine which has electric lights manufactured at the former reverberating furnace. Both are prominent tourist spots.

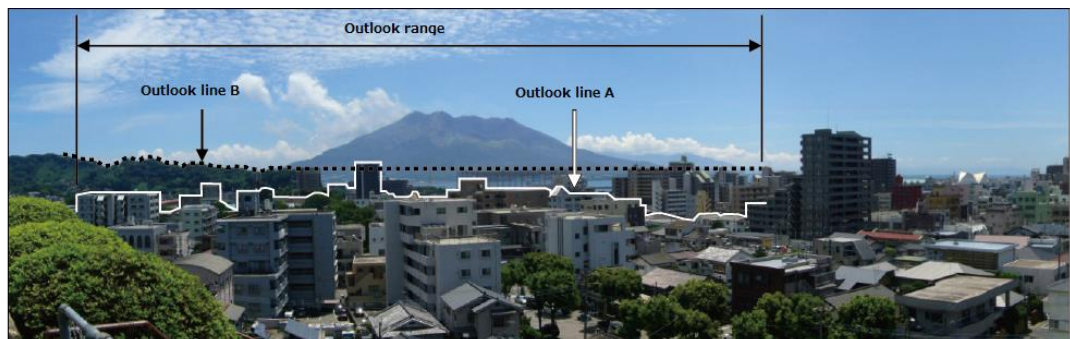
It is also a precious place where you can see panoramic views of Sakurajima and Tagayama.

In the middle of the park there is an outlook point for viewing the beautiful scenery. We are conserving the landscape of the Nanshumonzen-dori Street area so that it is guaranteed you can see Sakurajima and Tagayama from there.



◇ Outlook range

The view of Sakurajima towering above Kinko Bay that can be seen from Nanshu Park is considered by the Kagoshima City Urban Landscape Division to be one of the features of the area. We are establishing an outlook range so that the panoramic view can be conserved for future generations to inherit.



The view of Sakurajima from Nanshu Park

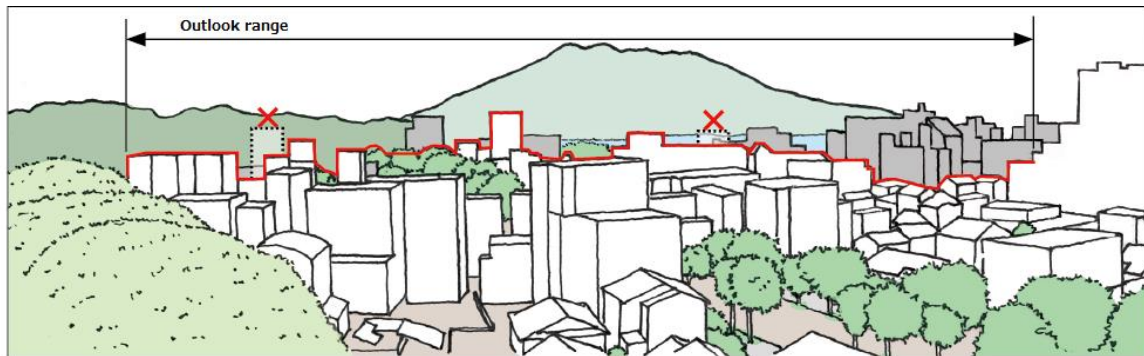
※Outlook line A: An outline of the current buildings in the area

※Outlook line B: The ridgeline of Tagayama and a horizontal line that continues from there to the left side.

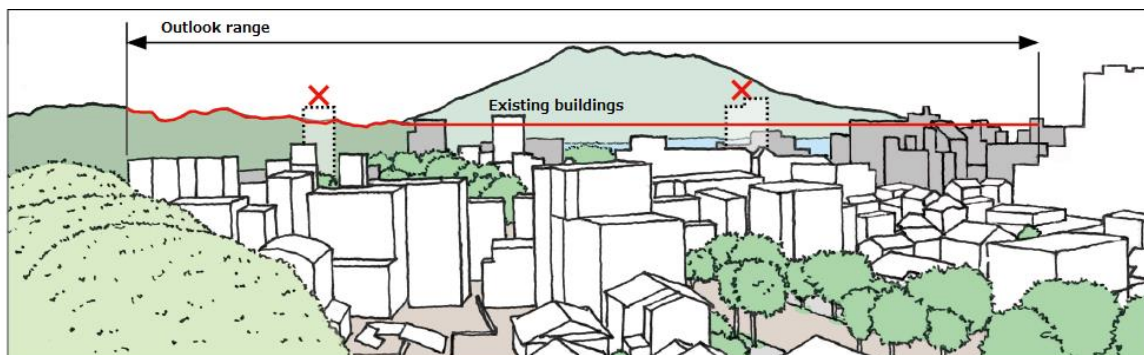
◇ Our approach to the formation of the landscape

Based on our aim to conserve the landscape viewable from the outlook point and guarantee the outlook range, our approach to the formation of the landscape is as follows.

- ① Introduce a height within the area that buildings cannot exceed. ・ ・ ・ Outlook line A
- ② Introduce a height that that cannot be exceeded by buildings etc. and does not obstruct the view of Sakurajima or the Tagayama ridge line. ・ ・ ・ Outlook line B



- ① We are endeavoring to make the height of buildings within the “outlook range” that can be seen from the height of 1.5ms at the city-designated outlook point (Nanshu Park), no higher than the outline of the current buildings in the area (outlook line A).



- ② Instead of building on vacant land in roadside areas and making it a low-rise area, if there are suitable reasons to suggest that we must make it a high-rise area, and therefore it inevitably comes to exceeding outlook line A, then we will endeavor to not exceed the height of the ridgeline of Tagayama and the horizontal line that continues from there to the left side (Outlook line B).